



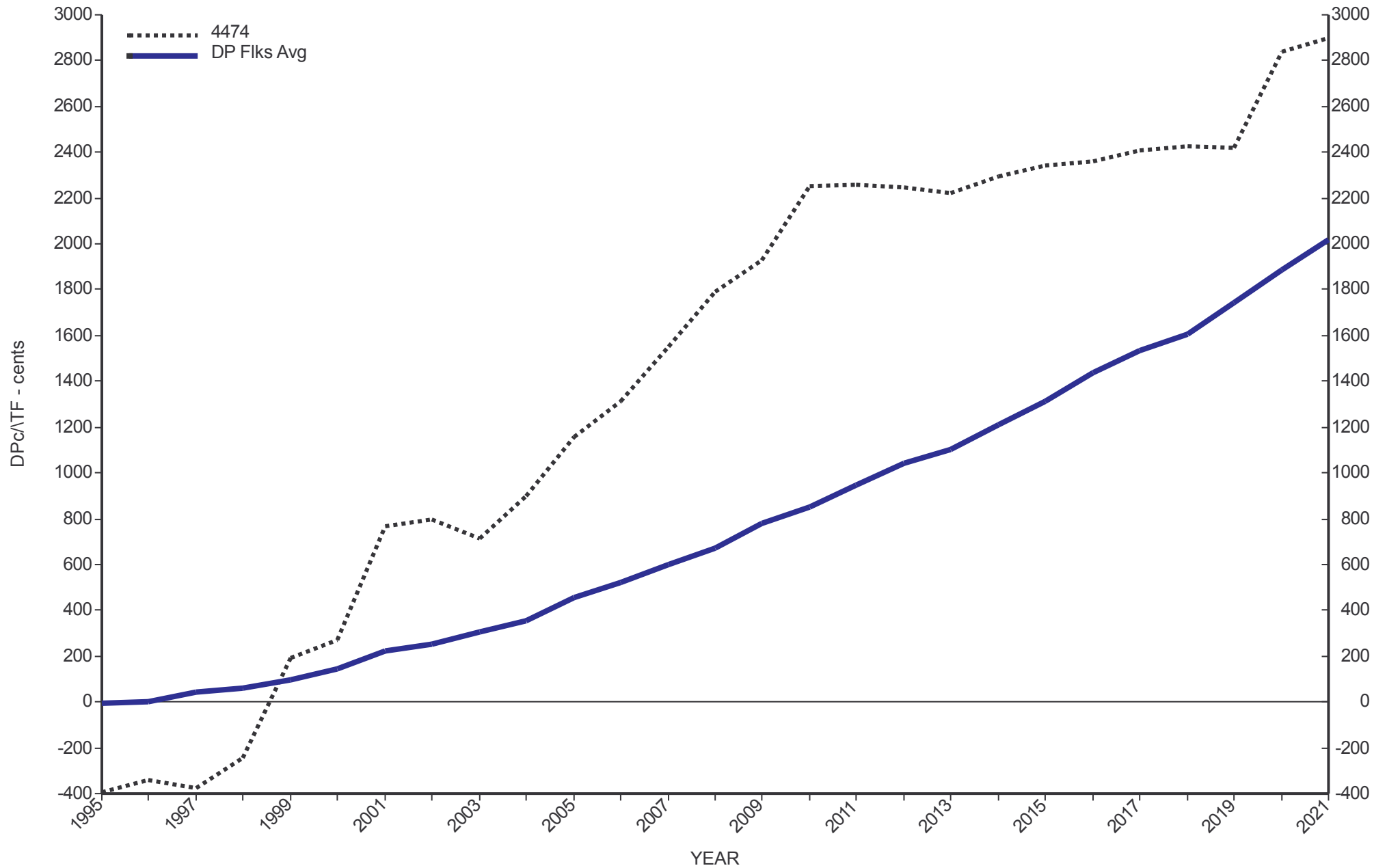
Genetic Trends

GE Analysis #39537 1/7/2022

for Flock 4474

Analysis Flocks: 1,2,7,8 + 1371 others

DPc\TF



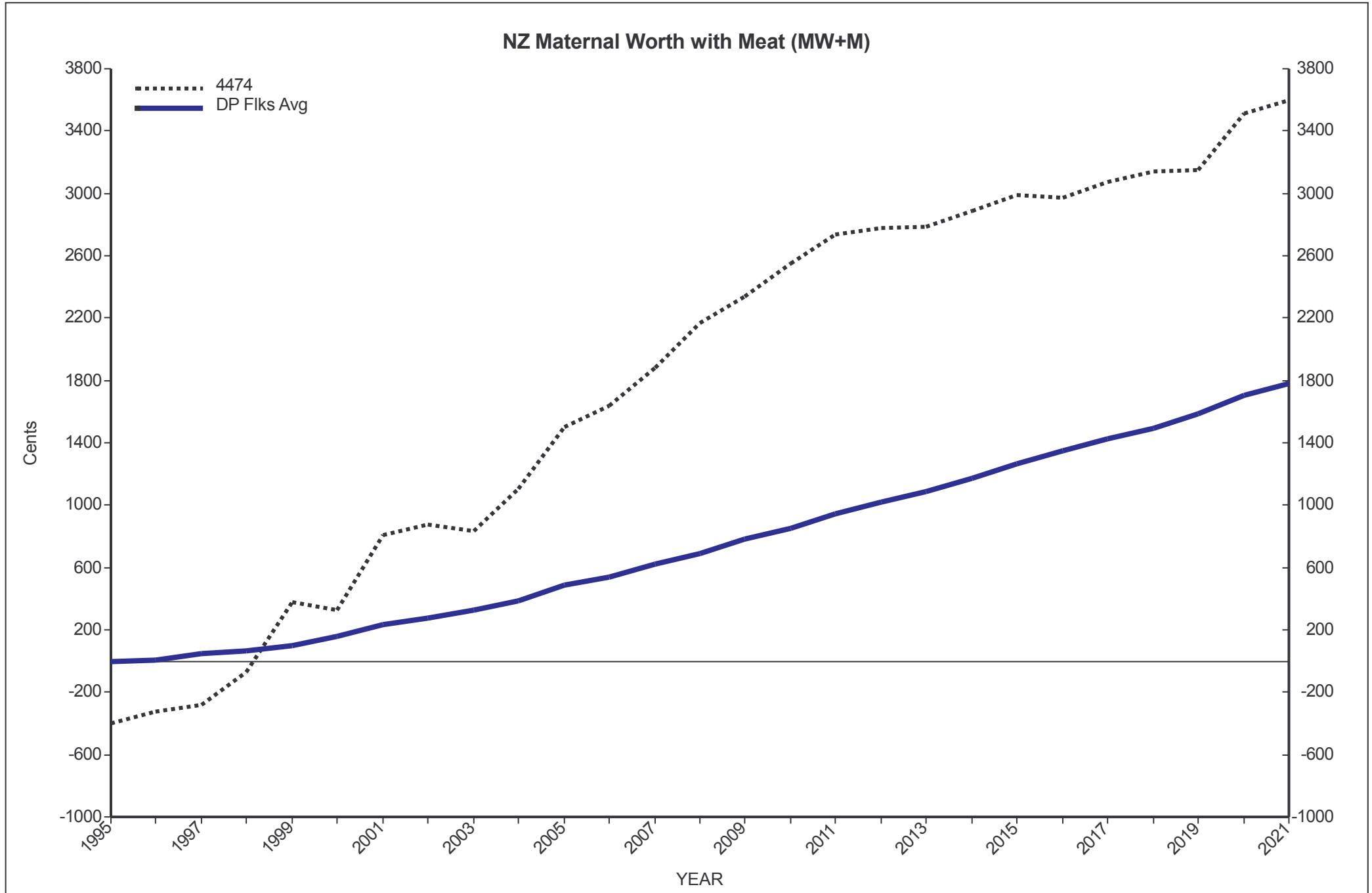


Genetic Trends

GE Analysis #39537 1/7/2022

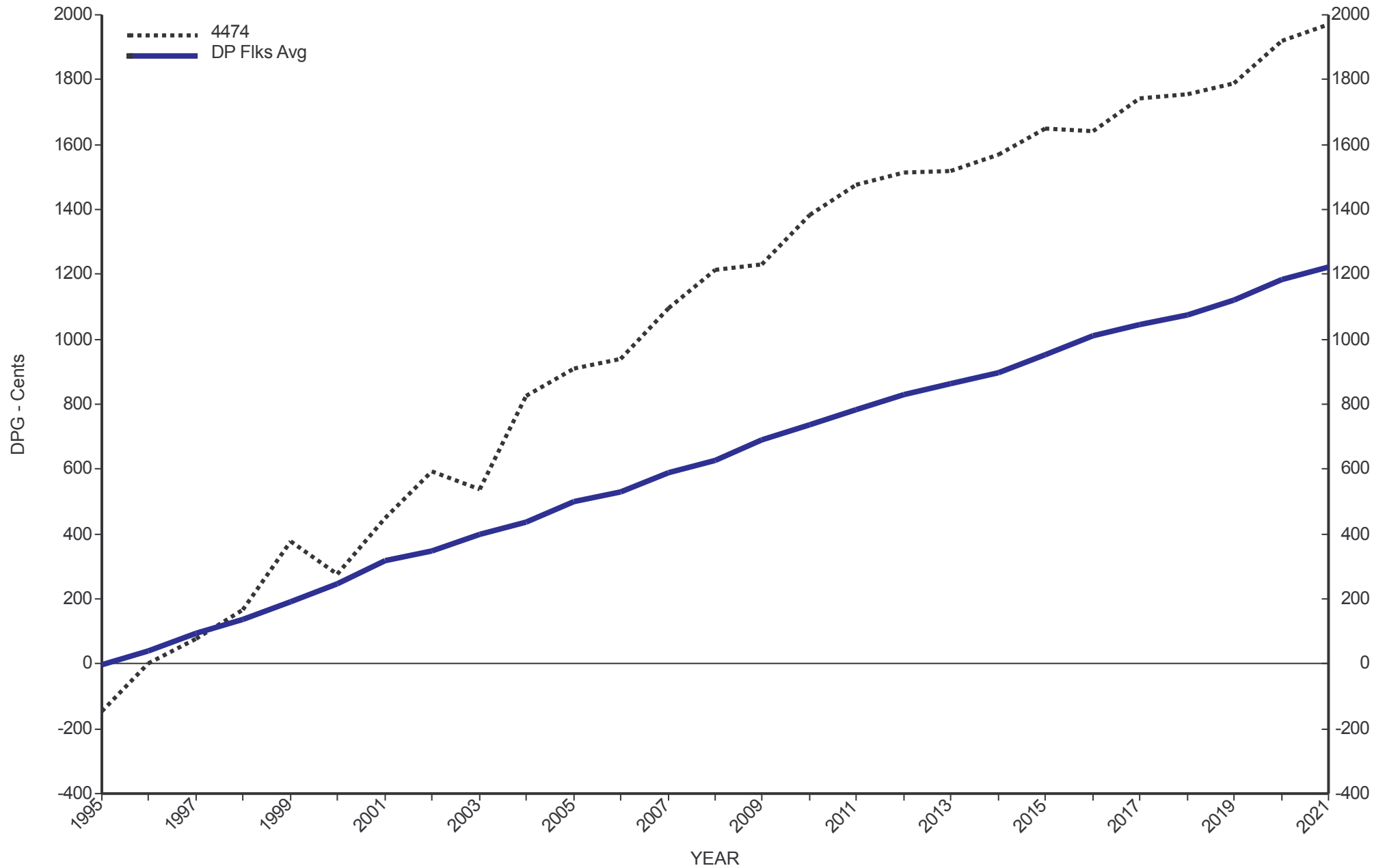
for Flock 4474

Analysis Flocks: 1,2,7,8 + 1371 others





SIL Dual Purpose Lamb Growth





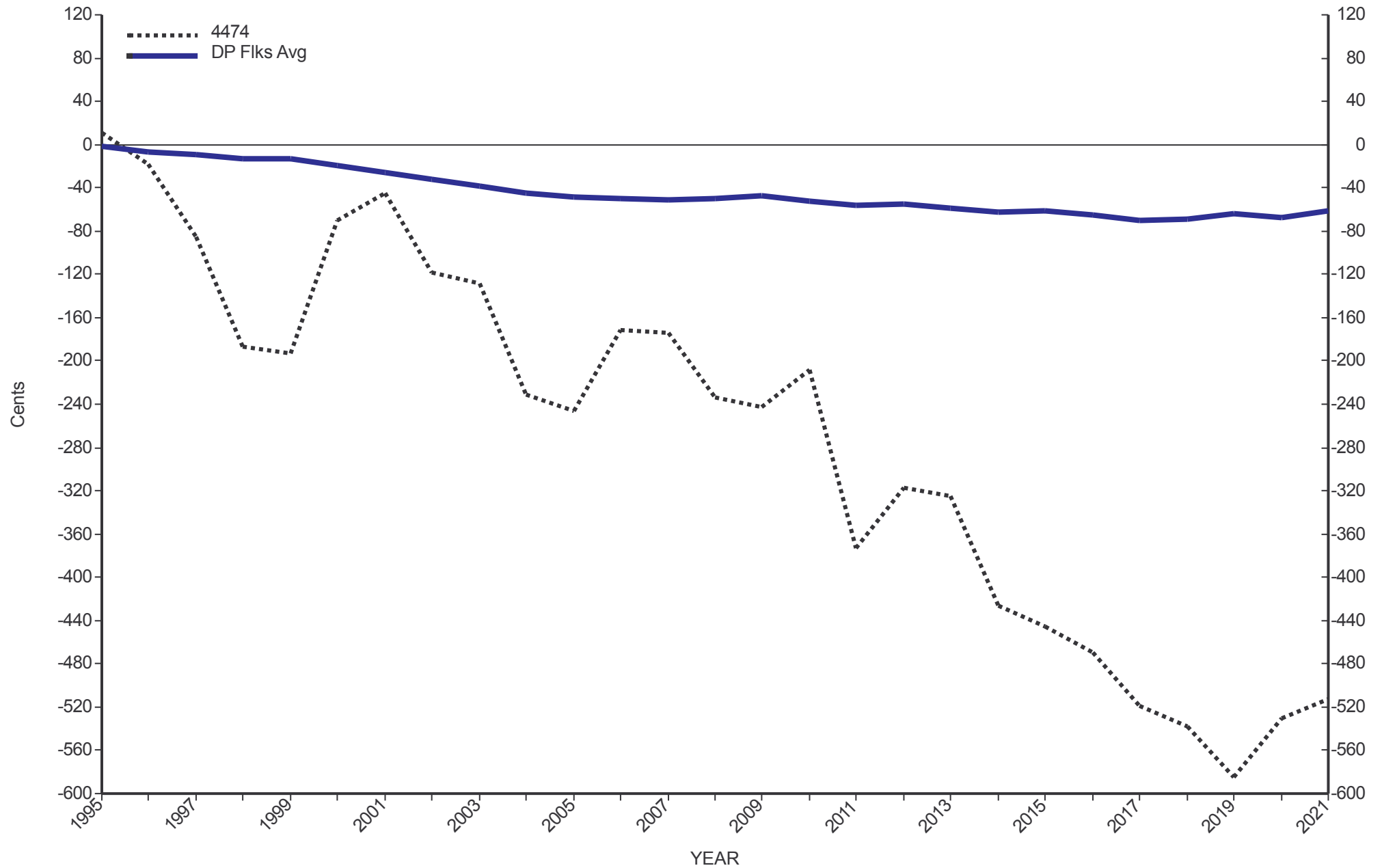
Genetic Trends

GE Analysis #39537 1/7/2022

for Flock 4474

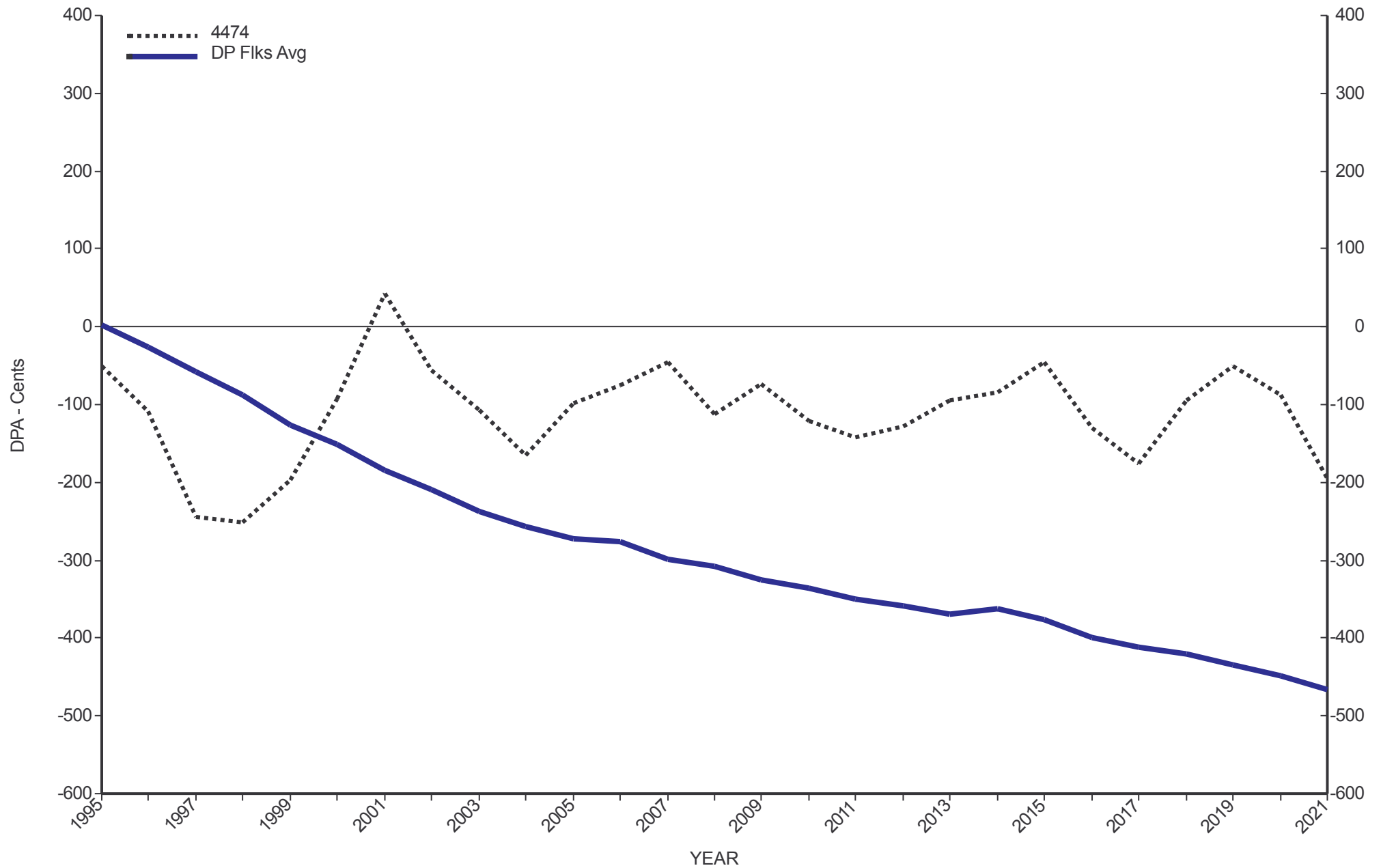
Analysis Flocks: 1,2,7,8 + 1371 others

SIL Dual Purpose WormFEC





SIL Dual Purpose Adult Size





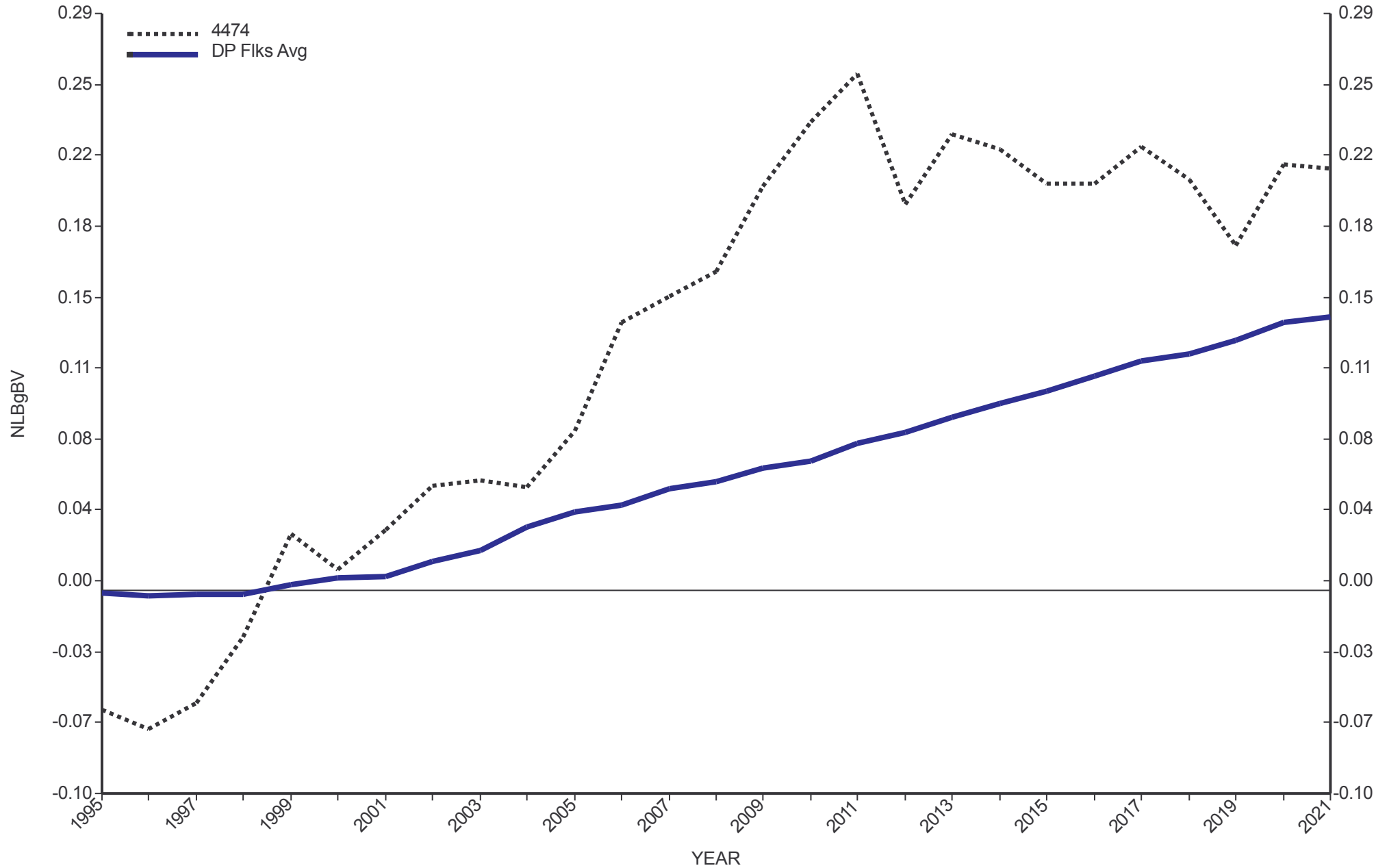
Genetic Trends

GE Analysis #39537 1/7/2022

for Flock 4474

Analysis Flocks: 1,2,7,8 + 1371 others

Number of lambs born gBV





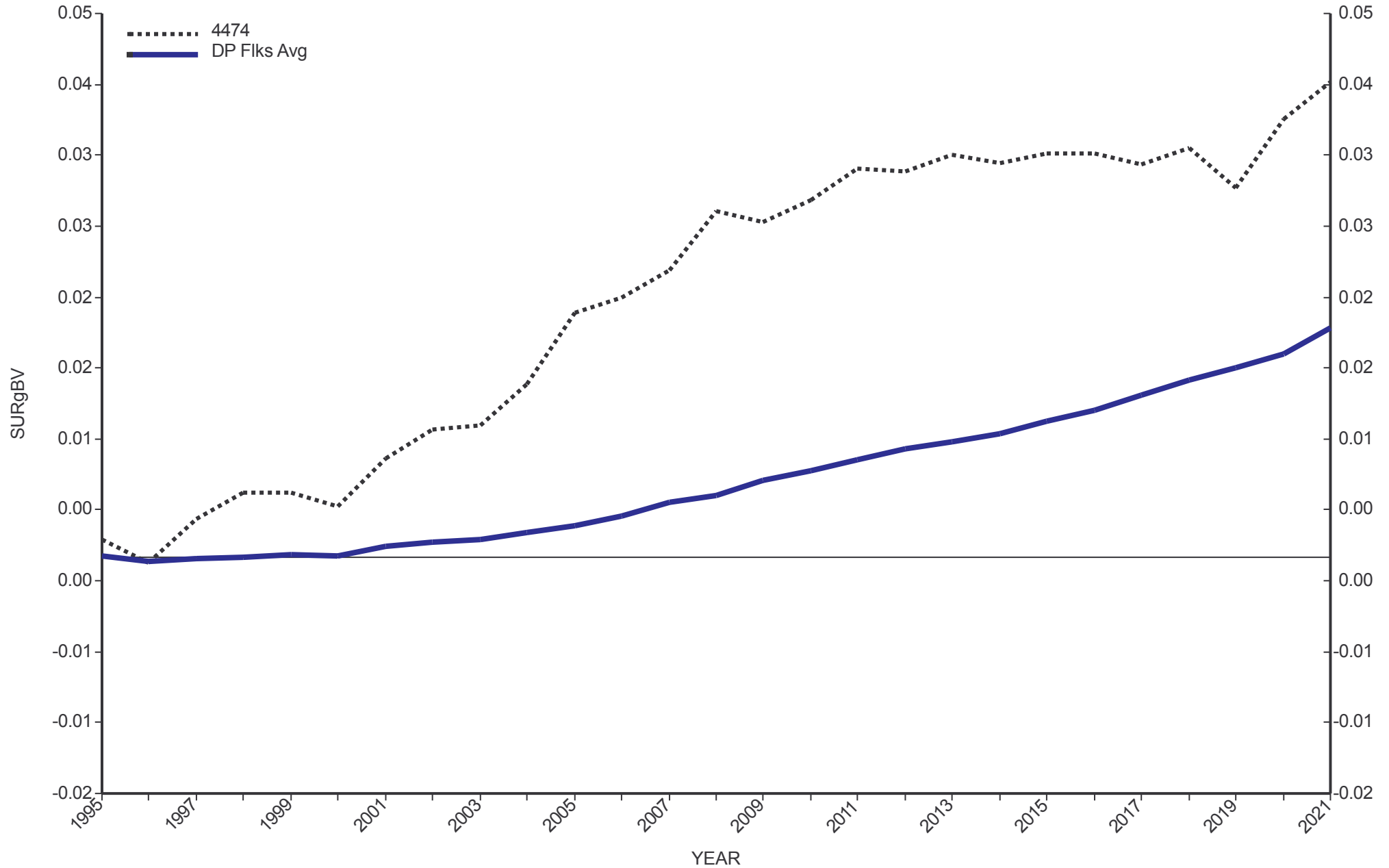
Genetic Trends

GE Analysis #39537 1/7/2022

for Flock 4474

Analysis Flocks: 1,2,7,8 + 1371 others

Lamb survival gBV





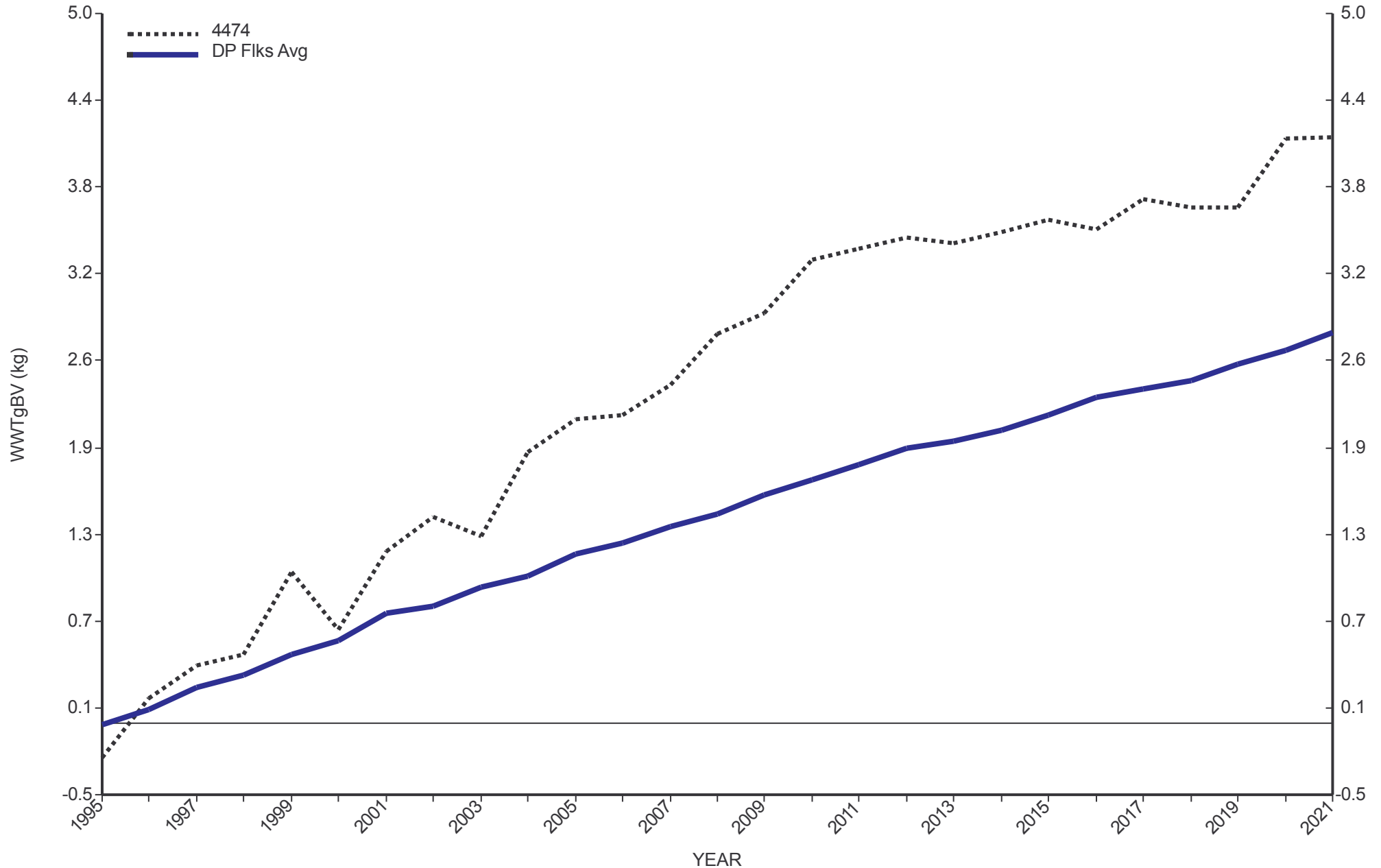
Genetic Trends

GE Analysis #39537 1/7/2022

for Flock 4474

Analysis Flocks: 1,2,7,8 + 1371 others

Weaning weight gBV





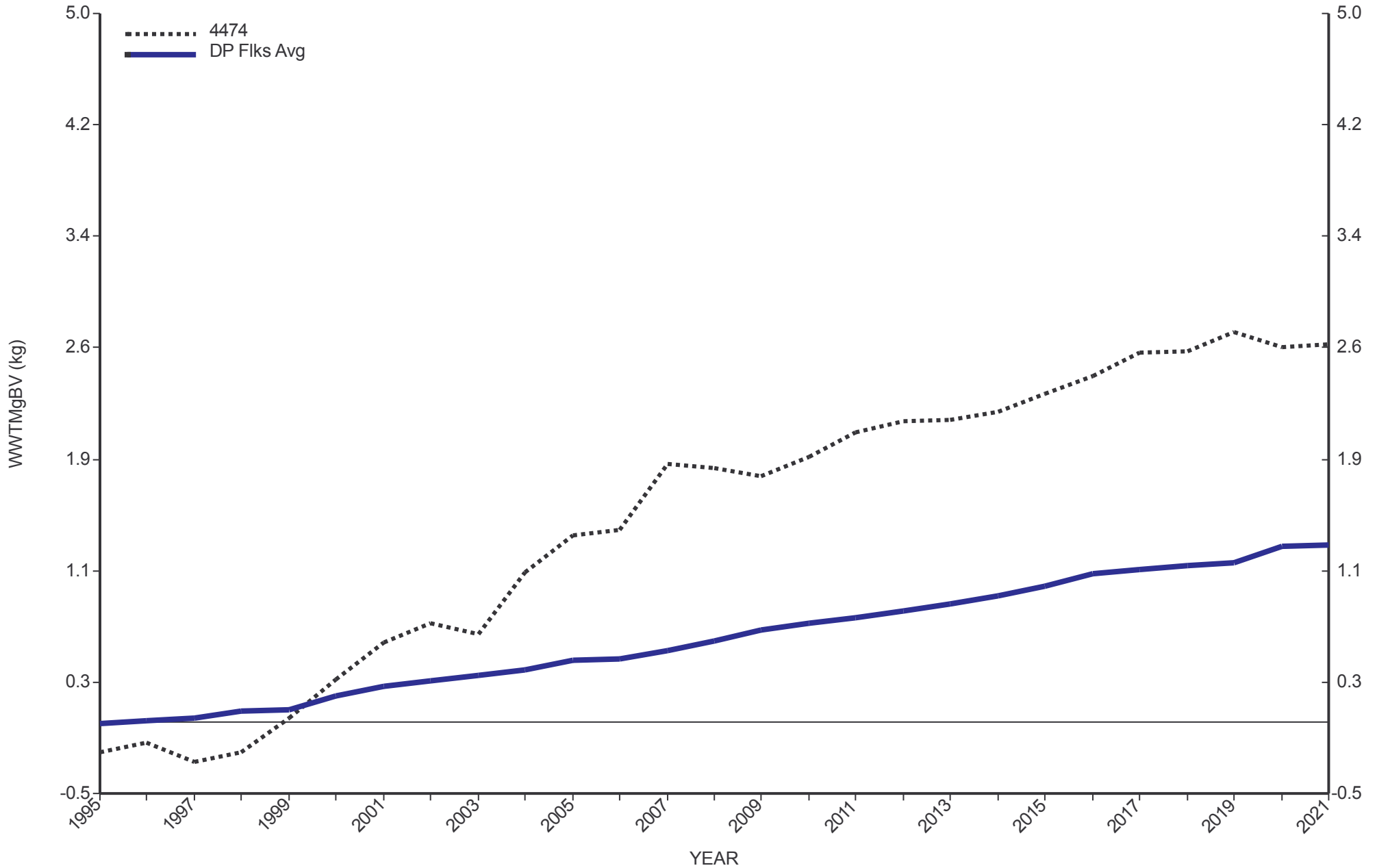
Genetic Trends

GE Analysis #39537 1/7/2022

for Flock 4474

Analysis Flocks: 1,2,7,8 + 1371 others

Weaning weight maternal gBV





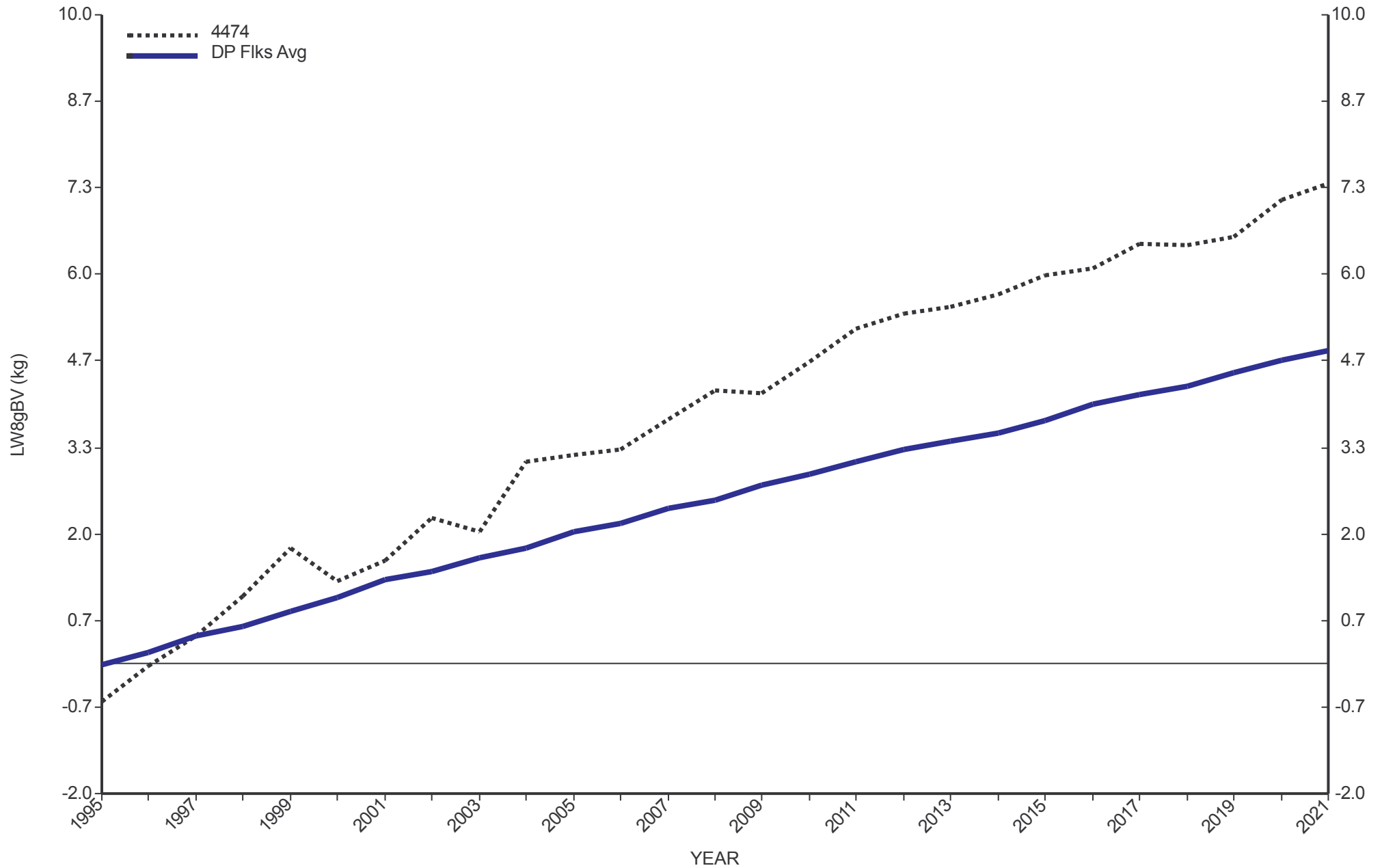
Genetic Trends

GE Analysis #39537 1/7/2022

for Flock 4474

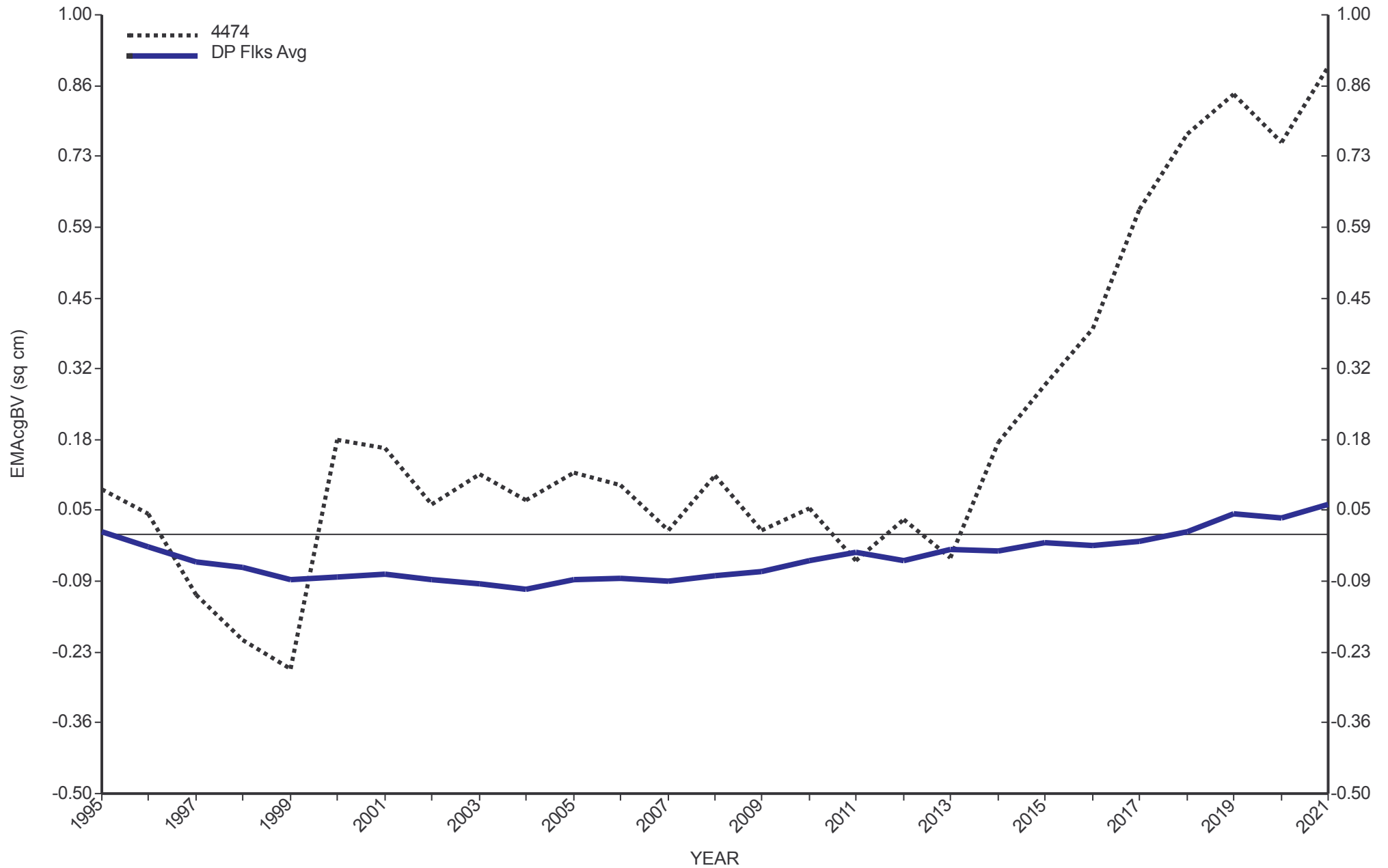
Analysis Flocks: 1,2,7,8 + 1371 others

Live weight 8 gBV





Eye muscle area - cwt adj gBV





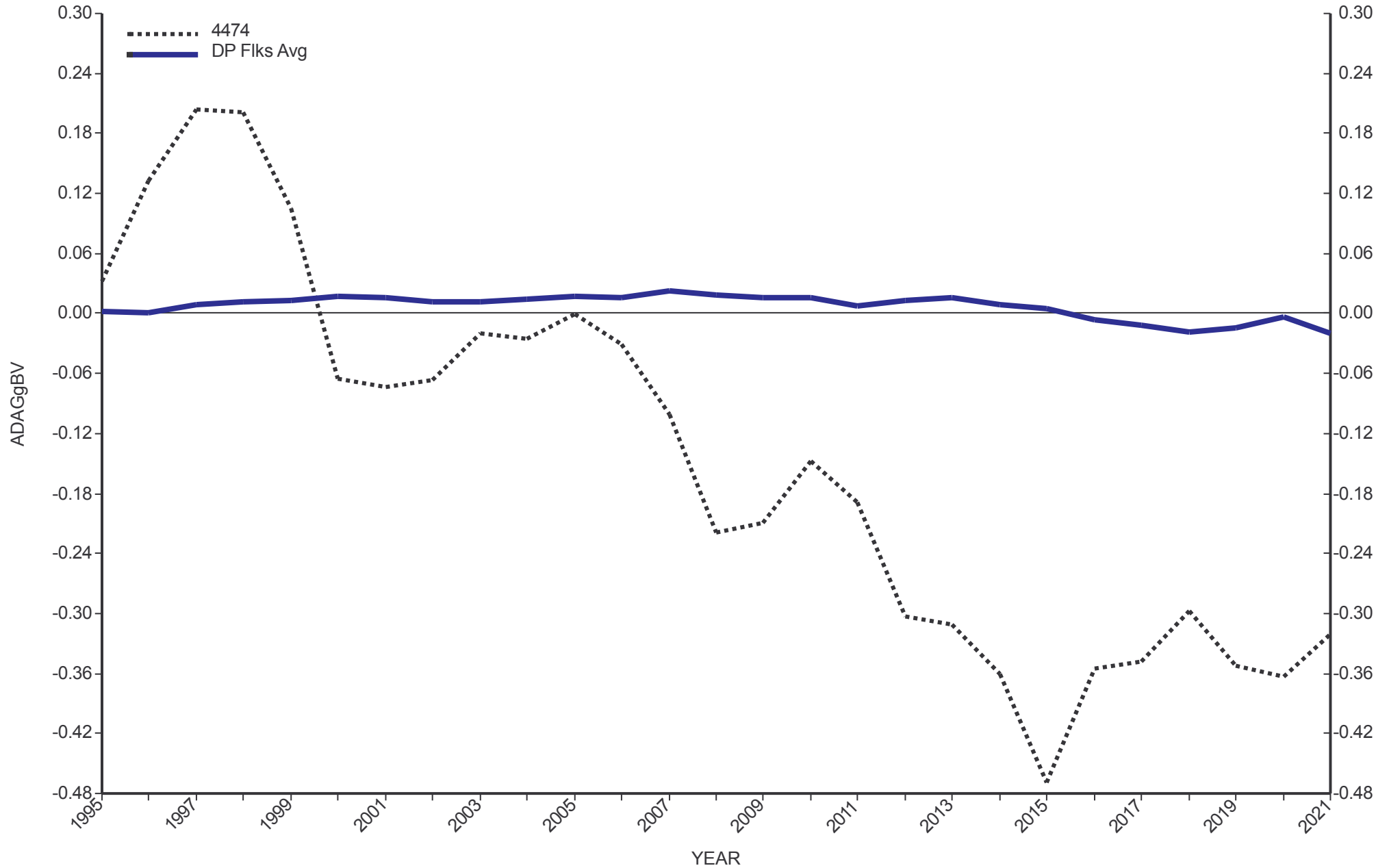
Genetic Trends

GE Analysis #39537 1/7/2022

for Flock 4474

Analysis Flocks: 1,2,7,8 + 1371 others

Adult dag score gBV



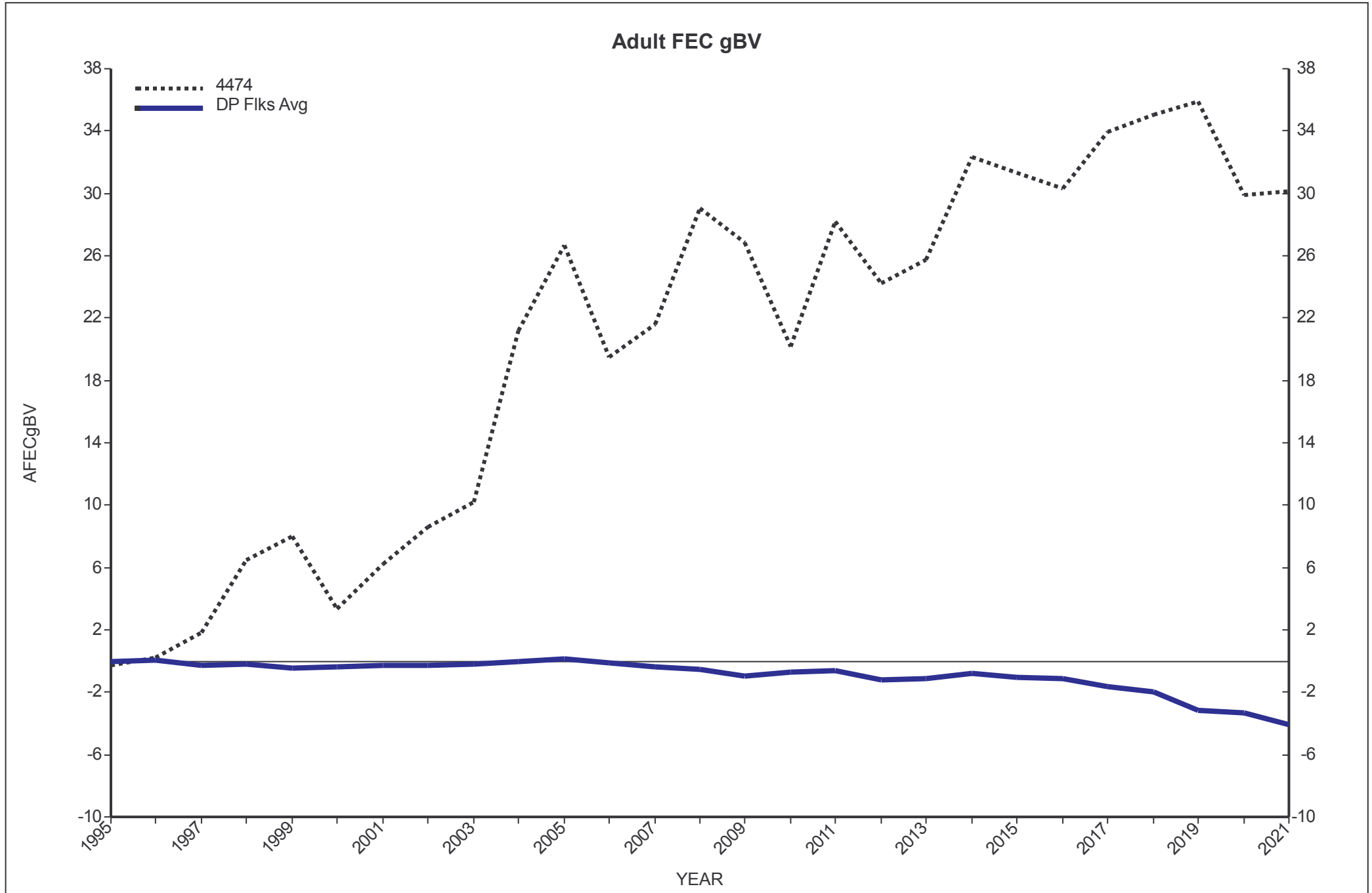


Genetic Trends

GE Analysis #39537 1/7/2022

for Flock 4474

Analysis Flocks: 1,2,7,8 + 1371 others





Genetic Trends

GE Analysis #39537 1/7/2022

for Flock 4474

Analysis Flocks: 1,2,7,8 + 1371 others

Fleece weight 12 gBV

